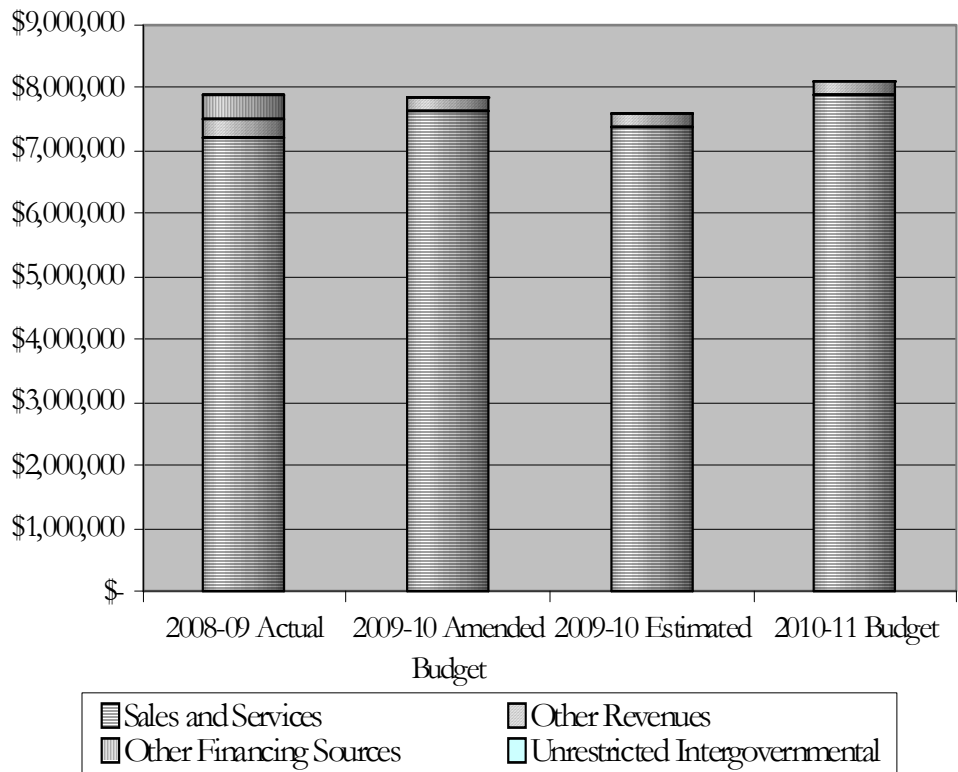


WATER & SEWER FUND REVENUE SUMMARY

Sources	2008-09 Actual	2009-10 Amended Budget	2009-10 Estimated	2010-11 Budget
Unrestricted Intergovernmental	\$ -	\$ -	\$ -	\$ 12,631
Sales and Services	7,191,426	7,638,045	7,382,162	7,864,860
Other Revenues	293,550	189,329	201,285	202,950
Other Financing Sources	400,000	9,942	-	-
Total	\$ 7,884,976	\$ 7,837,316	\$ 7,583,447	\$ 8,080,441



**WATER & SEWER ADMINISTRATION DEPARTMENT
ENTERPRISE FUND**

Statement of Department’s Purpose:

The purpose of the Water and Sewer Administration Department is to provide administrative oversight to ensure that the customers of the City’s water and wastewater treatment plants receive quality service, the City complies with environmental mandates, and the employees have a quality work experience.

Departmental Functions:

- Provide administrative support for operation of the water and wastewater treatment plants
- Provide information to the City’s Utilities Commission and City Council on the state of the City’s water and wastewater treatment systems
- Provide information to the public on the state of the City’s water and wastewater treatment systems
- Administer all state and federal permits associated with the operation of the water and wastewater treatment plants

2010-11 Objectives:

- Ensure that water and wastewater plants maintain compliance with federal and state regulations
- Collaborate with water and wastewater plant personnel so that operations are optimized to maintain performance while reducing costs
- Provide staff support necessary to promote recreation and water quality at Lake Thom-A-Lex
- Provide staff support for water quality related initiatives in the Abbots and Swearing Creek drainage basins
- Continue to work with property owners in the Lake Thom-A-Lex watershed to promote and acquire conservation easements

Performance Measures Summary:

Measures	FY 06-07	FY 07-08	FY 08-09
# of administrative employees for water & sewer	2	2	2
# of water customers	8,350	8,334	8,338
# of sewer customers	8,039	8,036	7,963

**WATER & SEWER ADMINISTRATION DEPARTMENT
ENTERPRISE FUND**

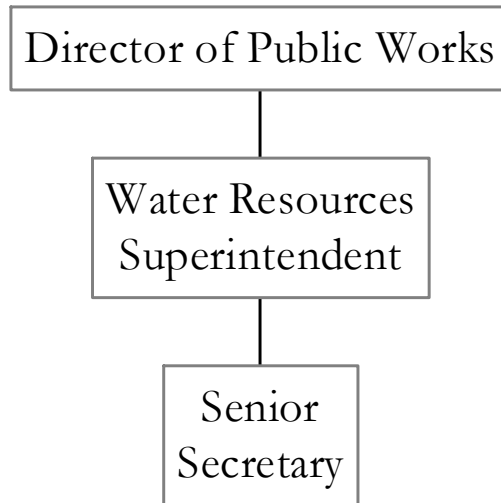
Budget Summary:

Expenditure Summary	2008-09 Actual	2009-10 Amended Budget	2009-10 Estimated	2010-11 Budget
Personnel	\$ 147,893	\$ 147,317	\$ 144,598	\$ 152,919
Operations	1,967,659	2,103,686	2,101,138	2,308,021
Capital Outlay	-	-	-	-
Other Financing Uses	1,232,033	623,631	623,631	785,981
Total	\$ 3,347,585	\$ 2,874,634	\$ 2,869,367	\$ 3,246,921

Personnel Positions	2008-09 Authorized	2009-10 Authorized	2010-11 Authorized	2010-11 Funded
Full Time	2	2	2	2

Capital Outlay: None.

City of Lexington Water & Sewer Administration



**WATER PLANT DEPARTMENT
ENTERPRISE FUND**

Statement of Department’s Purpose:

The purpose of the Water Plant Department is to provide an adequate supply of safe and pleasing drinking water at a reasonable cost, friendly and courteous service that is both timely and effective, as well as provide fire protection water supply for all customers.

Departmental Functions:

- Operate two water treatment plants to maintain compliance with permits and protect the health of the water system’s customers
- Operate the two water plants to provide adequate volumes of water for fire protection as necessary
- Operate a laboratory to provide data for operation of the water plants, the operation of the distribution system, and for state compliance reporting
- Assist (with Thomasville) in the upkeep of Lake Thom-A-Lex and in protecting its water quality

2010-11 Objectives:

- Provide a safe and productive work place
- Comply with state and federal regulations
- Continue maintenance program upgrades to water plant to enhance reliability
- With consultant, determine Phase II of disinfection-by-products compliance needs and costs

Performance Measures Summary:

Measures	FY 06-07	FY 07-08	FY 08-09
# of water plant employees	11	11	11
# of water plants	2	2	2
Design plant capacity (mgd)	9.4	9.4	9.4
Residential water bill (3 CCF usage)	\$12.33	\$12.33	\$14.12
Residential water bill (10 CCF usage)	\$21.78	\$21.78	\$24.20

**WATER PLANT DEPARTMENT
ENTERPRISE FUND**

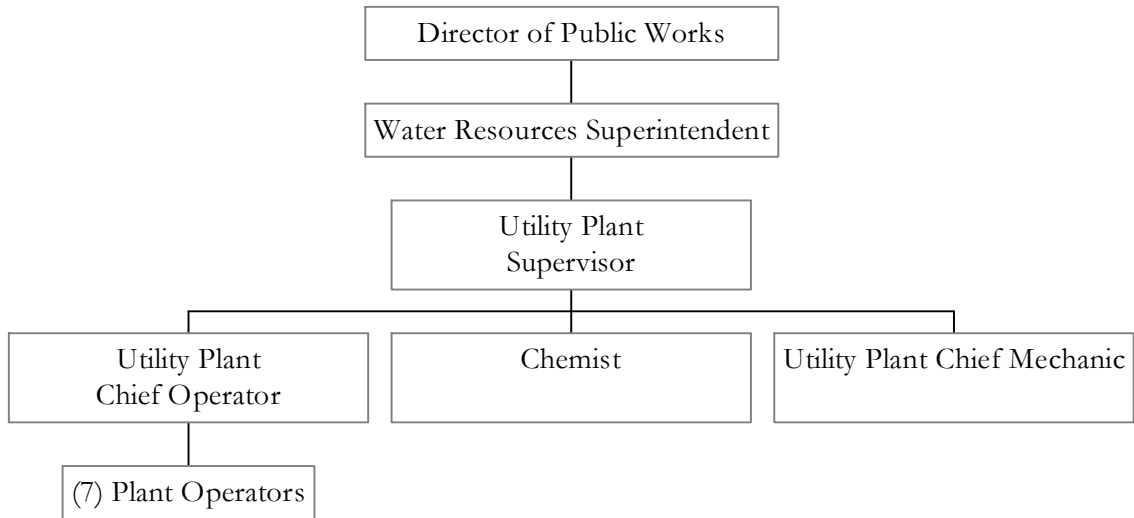
Budget Summary:

Expenditure Summary	2008-09 Actual	2009-10 Amended Budget	2009-10 Estimated	2010-11 Budget
Personnel	\$ 615,055	\$ 626,594	\$ 605,019	\$ 648,069
Operations	788,481	909,400	819,149	821,605
Capital Outlay	-	-	-	-
Total	\$ 1,403,536	\$ 1,535,994	\$ 1,424,168	\$ 1,469,674

Personnel Positions	2008-09 Authorized	2009-10 Authorized	2010-11 Authorized	2010-11 Funded
Full Time	11	11	11	11

Capital Outlay: None.

City of Lexington Water Plant



**WASTE TREATMENT PLANT DEPARTMENT
ENTERPRISE FUND**

Statement of Department’s Purpose:

The purpose of the Waste Treatment Plant Department is to provide quality, environmentally safe wastewater treatment at a reasonable cost to the customers of Lexington; where customers are treated in a friendly, courteous, and knowledgeable manner and given a prompt internal or external solution.

Departmental Functions:

- Treat wastewater at the Lexington Regional Wastewater Treatment Plant
- Produce compost from sludge generated at the Lexington Regional Wastewater Treatment Plant
- Operate two spray irrigation systems – one at the Lexington Wastewater Treatment Plant and one at the Lexington Golf Course
- Provide laboratory support for the wastewater treatment plan, the pretreatment program and the permits associated with water and wastewater treatment facilities
- Maintain a pretreatment program and an associated oil and grease program for the wastewater plant and the collection system

2010-11 Objectives:

- Maintain the level of operation at the compost plant
- Maintain compliance with the nutrient removal limits and optimize the plant’s newly constructed facilities
- Continue with scheduled replacements of valves and pumps at the Swearing Creek lift station
- Begin upgrade of the capacity of the compost facility
- Evaluate operation of the sludge handling facilities to see if the use of the anaerobic digesters can be discontinued

Performance Measures Summary:

Measures	FY 06-07	FY 07-08	FY 08-09
# of waste treatment plant employees	16	16	16
# of wastewater plants	1	1	1
Plant capacity (mgd)	6.5	6.5	6.5
Residential sewer bill (3 CCF usage)	\$15.43	\$15.43	\$18.24
Residential sewer bill (10 CCF usage)	\$33.42	\$33.42	\$37.35

**WASTE TREATMENT PLANT DEPARTMENT
ENTERPRISE FUND**

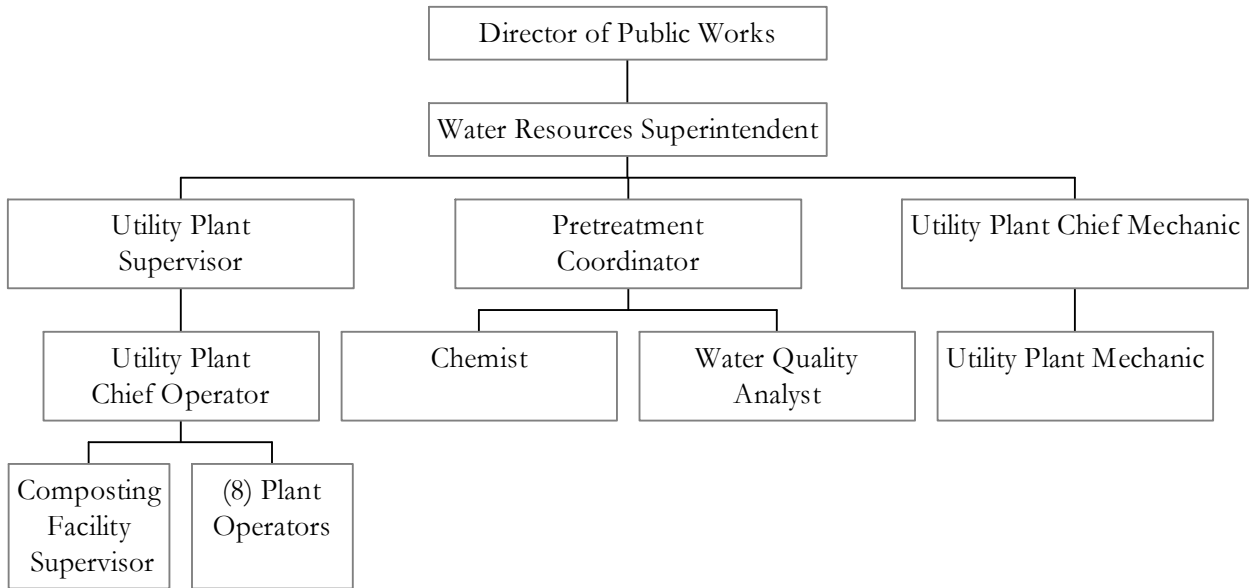
Budget Summary:

Expenditure Summary	2008-09 Actual	2009-10 Amended Budget	2009-10 Estimated	2010-11 Budget
Personnel	\$ 855,914	\$ 908,179	\$ 831,244	\$ 946,883
Operations	992,300	1,112,531	1,111,060	1,149,974
Capital Outlay	24,283	170,170	153,340	-
Total	\$ 1,872,497	\$ 2,190,880	\$ 2,095,644	\$ 2,096,857

Personnel Positions	2008-09 Authorized	2009-10 Authorized	2010-11 Authorized	2010-11 Funded
Full Time	16	16	16	16

Capital Outlay: None.

City of Lexington Waste Treatment Plant



**PUBLIC WORKS DEPARTMENT
ENTERPRISE FUND**

Statement of Department’s Purpose:

To maintain the water and sewer distribution and collection systems, including but not limited to: 202 miles of sewer mains, 184 miles of water mains, over 10,000 water taps, over 9,000 sewer taps, 32 sewer pumping stations and provide 24-7 service.

Departmental Functions:

Installation and maintenance of water and sewer mains, water meters, water and sewer service connections, fire hydrants, sewer manholes, sewer outfalls, sewer pumping stations, budget preparation, capital improvement planning, inspection and approval of contractor built projects, compliance with all water and sewer regulations as mandated by the North Carolina Department of Natural Resources

2010-11 Objectives:

- Provide quality customer service and ensure sensible growth of recently built sewer systems
- Repair and replace identified sections of defective sewer mains
- Clean and inspect sewer mains in at least 10% of the service area
- Replace 5 old or defective fire hydrants
- Provide continuous emergency response to utility emergencies
- Negotiate and comply with the terms of the collection system permit
- Review lift stations for possible replacement with gravity lines
- Provide assistance and inspection for the sewer projects being built by Davidson County
- Implement and update the Geographic Information System (GIS) mapping system and database
- Provide GIS capability to crews in the field
- Advise and assist management team in oversight of construction of Natural Gas/Public Works Utilities Operations Center

Performance Measures Summary:

Measures	FY 06-07	FY 07-08	FY 08-09
# of water & sewer maintenance & construction employees	15	15	15
Water miles	187	187	187
Sewer miles	202	202	212
Annual water sales (millions of gallons)	941	932	876
Annual water production (millions of gallons)	964	1,110	985
% system loss	3%	16%	11%

**PUBLIC WORKS DEPARTMENT
ENTERPRISE FUND**

Budget Summary:

Expenditure Summary	2008-09 Actual	2009-10 Amended Budget	2009-10 Estimated	2010-11 Budget
Personnel	\$ 754,728	\$ 772,627	\$ 742,461	\$ 803,865
Operations	443,173	423,681	380,132	440,979
Capital Outlay	38,899	39,500	39,500	22,145
Total	\$ 1,236,800	\$ 1,235,808	\$ 1,162,093	\$ 1,266,989

Personnel Positions	2008-09 Authorized	2009-10 Authorized	2010-11 Authorized	2010-11 Funded
Full Time	15	15	15	15

Capital Outlay: None.

<u>Item</u>	<u>New/Replacement</u>	<u>2010-11 Budget</u>
Cargo Van for Sewer Inspection System	R	<u>\$ 22,145</u>
Total		<u><u>\$ 22,145</u></u>

City of Lexington Public Works Maintenance & Construction

